

ETSB&OA 9/10 Bb/Eb Contra & Bass Clarinet

FINAL VERSION (no revisions)

Technical

Allegretto

Technical section musical notation, featuring two staves of music in 3/4 time with a key signature of one sharp (F#). The first staff begins with a piano (*p*) dynamic marking and features a series of eighth-note runs with slurs and accents. The second staff continues the melodic line with similar rhythmic patterns and concludes with a fermata.

Lyrical

Lyrical section musical notation, featuring two staves of music in common time with a key signature of two sharps (F# and C#). The first staff begins with a mezzo-forte (*mf*) dynamic marking and features a melodic line with slurs and accents. The second staff continues the melodic line with a second ending bracket and concludes with a fermata.

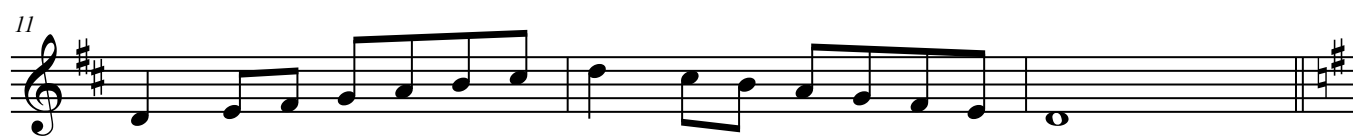
Bb Bass and Contra Clar.

2013 Scales 9/10



E♭ Contra Alto Clar.

2013 Scales 9/10



Scale should be played from the lowest written note to the highest written note of the scale sheet.